

QUARTERLY STATEMENT
OF THE
United Home Insurance Company

of
Paragould
in the state of
Arkansas

TO THE
Insurance Department
OF THE STATE OF
Arkansas

FOR THE QUARTER ENDED
MARCH 31, 2022

2022



QUARTERLY STATEMENT
AS OF MARCH 31, 2022
 OF THE CONDITION AND AFFAIRS OF THE
United Home Insurance Company

NAIC Group Code 0000 , 0000 NAIC Company Code 17647 Employer's ID Number 73-1233518
(Current Period) (Prior Period)

Organized under the Laws of Arkansas , State of Domicile or Port of Entry AR

Country of Domicile United States of America

Incorporated/Organized 07/17/1984 Commenced Business 03/01/1985

Statutory Home Office 1201 West Court Street , Paragould, AR, US 72450
(Street and Number) (City or Town, State, Country and Zip Code)

Main Administrative Office 1201 West Court Street
(Street and Number)

Paragould, AR, US 72450 (870)236-2208
(City or Town, State, Country and Zip Code) (Area Code) (Telephone Number)

Mail Address P.O. Box 1546 , Paragould, AR, US 72451
(Street and Number or P.O. Box) (City or Town, State, Country and Zip Code)

Primary Location of Books and Records 1201 West Court Street
(Street and Number)

Paragould, AR, US 72450 (870)236-2208
(City or Town, State, Country and Zip Code) (Area Code) (Telephone Number)

Internet Web Site Address www.unitedhomeins.com

Statutory Statement Contact Kris M Boozer (870)236-2208-359
(Name) (Area Code)(Telephone Number)(Extension)

KBoozer@unitedhomeins.com (870)236-5717
(E-Mail Address) (Fax Number)

OFFICERS

<u>Name</u>	<u>Title</u>
William Kyle Harris	Chief Executive Officer
Matthew Stephen Miller	President
William Kyle Harris	Secretary/Treasurer

OTHERS

DIRECTORS OR TRUSTEES

William Kyle Harris	Michael Thomas Harris
Michael Ray Cline	Matthew Stephen Miller
Michael P Ford	

State of Arkansas
 County of United States ss

The officers of this reporting entity being duly sworn, each depose and say that they are the described officers of said reporting entity, and that on the reporting period stated above, all of the herein described assets were the absolute property of the said reporting entity, free and clear from any liens or claims thereon, except as herein stated, and that this statement, together with related exhibits, schedules and explanations therein contained, annexed or referred to, is a full and true statement of all the assets and liabilities and of the condition and affairs of the said reporting entity as of the reporting period stated above, and of its income and deductions therefrom for the period ended, and have been completed in accordance with the NAIC Annual Statement Instructions and Accounting Practices and Procedures manual except to the extent that: (1) state law may differ; or, (2) that state rules or regulations require differences in reporting not related to accounting practices and procedures, according to the best of their information, knowledge and belief, respectively. Furthermore, the scope of this attestation by the described officers also includes the related corresponding electronic filing with the NAIC, when required, that is an exact copy (except for formatting differences due to electronic filing) of the enclosed statement. The electronic filing may be requested by various regulators in lieu of or in addition to the enclosed statement.

(Signature)
 William Kyle Harris
(Printed Name)
 1.
 Chief Executive Officer
(Title)

(Signature)
 Matthew Stephen Miller
(Printed Name)
 2.
 President
(Title)

(Signature)
 William Kyle Harris
(Printed Name)
 3.
 Secretary/Treasurer
(Title)

Subscribed and sworn to before me this _____ day of _____, 2022

- a. Is this an original filing?
 b. If no, 1. State the amendment number
 2. Date filed
 3. Number of pages attached

Yes[X] No[]

(Notary Public Signature)

ASSETS

	Current Statement Date			4 December 31 Prior Year Net Admitted Assets
	1 Assets	2 Nonadmitted Assets	3 Net Admitted Assets (Cols. 1 - 2)	
1. Bonds	32,441,208		32,441,208	34,252,607
2. Stocks:				
2.1 Preferred stocks				
2.2 Common stocks	3,088,243		3,088,243	3,085,981
3. Mortgage loans on real estate:				
3.1 First liens				
3.2 Other than first liens				
4. Real estate:				
4.1 Properties occupied by the company (less \$.....0 encumbrances)	3,447,306		3,447,306	3,426,447
4.2 Properties held for the production of income (less \$.....0 encumbrances)	213,878		213,878	215,922
4.3 Properties held for sale (less \$.....0 encumbrances)				
5. Cash (\$.....12,275,206), cash equivalents (\$.....0) and short-term investments (\$.....0)	12,275,206		12,275,206	9,367,498
6. Contract loans (including \$.....0 premium notes)				
7. Derivatives				
8. Other invested assets				
9. Receivables for securities				
10. Securities lending reinvested collateral assets				
11. Aggregate write-ins for invested assets				
12. Subtotals, cash and invested assets (Lines 1 to 11)	51,465,841		51,465,841	50,348,455
13. Title plants less \$.....0 charged off (for Title insurers only)				
14. Investment income due and accrued	249,648		249,648	301,899
15. Premiums and considerations:				
15.1 Uncollected premiums and agents' balances in the course of collection	8,431,428		8,431,428	8,282,804
15.2 Deferred premiums, agents' balances and installments booked but deferred and not yet due (including \$.....0 earned but unbilled premiums)				
15.3 Accrued retrospective premiums (\$.....0) and contracts subject to redetermination (\$.....0)				
16. Reinsurance:				
16.1 Amounts recoverable from reinsurers	2,496,125		2,496,125	734,836
16.2 Funds held by or deposited with reinsured companies				
16.3 Other amounts receivable under reinsurance contracts	256,056		256,056	27,567
17. Amounts receivable relating to uninsured plans				
18.1 Current federal and foreign income tax recoverable and interest thereon	476,773		476,773	476,773
18.2 Net deferred tax asset	1,292,305		1,292,305	1,767,452
19. Guaranty funds receivable or on deposit				
20. Electronic data processing equipment and software				
21. Furniture and equipment, including health care delivery assets (\$.....0)	27,206	27,206		
22. Net adjustments in assets and liabilities due to foreign exchange rates				
23. Receivables from parent, subsidiaries and affiliates				
24. Health care (\$.....0) and other amounts receivable				
25. Aggregate write-ins for other-than-invested assets	377,451	377,451		
26. TOTAL assets excluding Separate Accounts, Segregated Accounts and Protected Cell Accounts (Lines 12 to 25)	65,072,834	404,658	64,668,176	61,939,786
27. From Separate Accounts, Segregated Accounts and Protected Cell Accounts				
28. TOTAL (Lines 26 and 27)	65,072,834	404,658	64,668,176	61,939,786
DETAILS OF WRITE-INS				
1101.				
1102.				
1103.				
1198. Summary of remaining write-ins for Line 11 from overflow page				
1199. TOTALS (Lines 1101 through 1103 plus 1198) (Line 11 above)				
2501. Company Vehicles	377,451	377,451		
2502.				
2503.				
2598. Summary of remaining write-ins for Line 25 from overflow page				
2599. TOTALS (Lines 2501 through 2503 plus 2598) (Line 25 above)	377,451	377,451		

LIABILITIES, SURPLUS AND OTHER FUNDS

	1 Current Statement Date	2 December 31, Prior Year
1. Losses (current accident year \$.....3,940,457)	10,095,449	10,986,490
2. Reinsurance payable on paid losses and loss adjustment expenses		
3. Loss adjustment expenses	151,537	194,760
4. Commissions payable, contingent commissions and other similar charges	1,034,557	887,032
5. Other expenses (excluding taxes, licenses and fees)		145,904
6. Taxes, licenses and fees (excluding federal and foreign income taxes)	564,907	558,747
7.1 Current federal and foreign income taxes (including \$.....0 on realized capital gains (losses))		
7.2 Net deferred tax liability		
8. Borrowed money \$.....0 and interest thereon \$.....0		972
9. Unearned premiums (after deducting unearned premiums for ceded reinsurance of \$.....2,538,830 and including warranty reserves of \$.....0 and accrued accident and health experience rating refunds including \$.....0 for medical loss ratio rebate per the Public Health Service Act)	31,074,001	29,267,610
10. Advance premium	1,627,179	994,356
11. Dividends declared and unpaid:		
11.1 Stockholders		
11.2 Policyholders		
12. Ceded reinsurance premiums payable (net of ceding commissions)		762,682
13. Funds held by company under reinsurance treaties		
14. Amounts withheld or retained by company for account of others	24,802	24,473
15. Remittances and items not allocated		
16. Provision for reinsurance (including \$.....0 certified)		
17. Net adjustments in assets and liabilities due to foreign exchange rates		
18. Drafts outstanding		
19. Payable to parent, subsidiaries and affiliates		
20. Derivatives		
21. Payable for securities		
22. Payable for securities lending		
23. Liability for amounts held under uninsured plans		
24. Capital notes \$.....0 and interest thereon \$.....0		
25. Aggregate write-ins for liabilities		
26. TOTAL liabilities excluding protected cell liabilities (Lines 1 through 25)	44,572,432	43,823,027
27. Protected cell liabilities		
28. TOTAL liabilities (Lines 26 and 27)	44,572,432	43,823,027
29. Aggregate write-ins for special surplus funds		
30. Common capital stock	2,500,000	2,500,000
31. Preferred capital stock		
32. Aggregate write-ins for other-than-special surplus funds		
33. Surplus notes		
34. Gross paid in and contributed surplus	1,037,931	1,037,931
35. Unassigned funds (surplus)	16,557,813	14,578,828
36. Less treasury stock, at cost:		
36.10 shares common (value included in Line 30 \$.....0)		
36.20 shares preferred (value included in Line 31 \$.....0)		
37. Surplus as regards policyholders (Lines 29 to 35, less 36)	20,095,744	18,116,759
38. TOTALS (Page 2, Line 28, Col. 3)	64,668,176	61,939,786
DETAILS OF WRITE-INS		
2501.		
2502.		
2503.		
2598. Summary of remaining write-ins for Line 25 from overflow page		
2599. TOTALS (Lines 2501 through 2503 plus 2598) (Line 25 above)		
2901. 0		
2902.		
2903.		
2998. Summary of remaining write-ins for Line 29 from overflow page		
2999. TOTALS (Lines 2901 through 2903 plus 2998) (Line 29 above)		
3201.		
3202.		
3203.		
3298. Summary of remaining write-ins for Line 32 from overflow page		
3299. TOTALS (Lines 3201 through 3203 plus 3298) (Line 32 above)		

STATEMENT OF INCOME

	1 Current Year to Date	2 Prior Year to Date	3 Prior Year Ended December 31
UNDERWRITING INCOME			
1. Premiums earned			
1.1 Direct (written \$.....18,498,155)	16,691,765	14,879,339	68,666,291
1.2 Assumed (written \$.....0)			
1.3 Ceded (written \$.....1,176,236)	1,014,041	1,162,684	10,243,057
1.4 Net (written \$.....17,321,919)	15,677,724	13,716,655	58,423,234
DEDUCTIONS:			
2. Losses incurred (current accident year \$.....8,780,171)			
2.1 Direct	11,801,373	9,767,100	53,651,993
2.2 Assumed			
2.3 Ceded	3,607,729	1,037,670	9,244,065
2.4 Net	8,193,643	8,729,430	44,407,929
3. Loss adjustment expenses incurred	543,187	458,652	2,459,281
4. Other underwriting expenses incurred	5,271,926	4,818,591	18,381,055
5. Aggregate write-ins for underwriting deductions			
6. TOTAL underwriting deductions (Lines 2 through 5)	14,008,756	14,006,672	65,248,265
7. Net income of protected cells			
8. Net underwriting gain or (loss) (Line 1 minus Line 6 + Line 7)	1,668,968	(290,018)	(6,825,031)
INVESTMENT INCOME			
9. Net investment income earned	263,112	257,154	1,091,534
10. Net realized capital gains (losses) less capital gains tax of \$.....0	49	92,047	91,875
11. Net investment gain (loss) (Lines 9 + 10)	263,162	349,202	1,183,409
OTHER INCOME			
12. Net gain or (loss) from agents' or premium balances charged off (amount recovered \$.....0 amount charged off \$.....0)			
13. Finance and service charges not included in premiums	569,877	527,716	2,249,797
14. Aggregate write-ins for miscellaneous income	31,363		49,000
15. TOTAL other income (Lines 12 through 14)	601,240	527,716	2,298,797
16. Net income before dividends to policyholders, after capital gains tax and before all other federal and foreign income taxes (Lines 8 + 11 + 15)	2,533,370	586,901	(3,342,825)
17. Dividends to policyholders			
18. Net income, after dividends to policyholders, after capital gains tax and before all other federal and foreign income taxes (Line 16 minus Line 17)	2,533,370	586,901	(3,342,825)
19. Federal and foreign income taxes incurred		180,597	(579,352)
20. Net income (Line 18 minus Line 19) (to Line 22)	2,533,370	406,304	(2,763,473)
CAPITAL AND SURPLUS ACCOUNT			
21. Surplus as regards policyholders, December 31 prior year	18,116,760	20,590,895	20,590,895
22. Net income (from Line 20)	2,533,370	406,304	(2,763,473)
23. Net transfers (to) from Protected Cell accounts			
24. Change in net unrealized capital gains or (losses) less capital gains tax of \$.....0	(97,074)	31,330	424,404
25. Change in net unrealized foreign exchange capital gain (loss)			
26. Change in net deferred income tax	(475,147)	79,778	179,561
27. Change in nonadmitted assets	17,836	(89,631)	(14,628)
28. Change in provision for reinsurance			
29. Change in surplus notes			
30. Surplus (contributed to) withdrawn from Protected cells			
31. Cumulative effect of changes in accounting principles			
32. Capital changes:			
32.1 Paid in			
32.2 Transferred from surplus (Stock Dividend)			
32.3 Transferred to surplus			
33. Surplus adjustments:			
33.1 Paid in			
33.2 Transferred to capital (Stock Dividend)			
33.3 Transferred from capital			
34. Net remittances from or (to) Home Office			
35. Dividends to stockholders			(300,000)
36. Change in treasury stock			
37. Aggregate write-ins for gains and losses in surplus			
38. Change in surplus as regards policyholders (Lines 22 through 37)	1,978,984	427,780	(2,474,135)
39. Surplus as regards policyholders, as of statement date (Lines 21 plus 38)	20,095,744	21,018,675	18,116,760
DETAILS OF WRITE-INS			
0501.			
0502.			
0503.			
0598. Summary of remaining write-ins for Line 5 from overflow page			
0599. TOTALS (Lines 0501 through 0503 plus 0598) (Line 5 above)			
1401. Gain /Loss on sale of asset	27,613		
1402. Rent Income	3,750		9,000
1403. AR Ready for Business Grant			40,000
1498. Summary of remaining write-ins for Line 14 from overflow page			
1499. TOTALS (Lines 1401 through 1403 plus 1498) (Line 14 above)	31,363		49,000
3701.			
3702.			
3703.			
3798. Summary of remaining write-ins for Line 37 from overflow page			
3799. TOTALS (Lines 3701 through 3703 plus 3798) (Line 37 above)			

CASH FLOW

	1 Current Year To Date	2 Prior Year To Date	3 Prior Year Ended December 31
Cash from Operations			
1. Premiums collected net of reinsurance	17,205,631	15,110,581	62,843,175
2. Net investment income	325,991	304,005	1,108,091
3. Miscellaneous income	372,751	527,716	2,377,221
4. TOTAL (Lines 1 to 3)	17,904,373	15,942,302	66,328,486
5. Benefit and loss related payments	10,845,973	9,017,911	39,416,615
6. Net transfers to Separate Accounts, Segregated Accounts and Protected Cell Accounts		(1)	
7. Commissions, expenses paid and aggregate write-ins for deductions	5,850,554	5,060,760	20,543,550
8. Dividends paid to policyholders			
9. Federal and foreign income taxes paid (recovered) net of \$.....0 tax on capital gains (losses)		1	199,363
10. TOTAL (Lines 5 through 9)	16,696,527	14,078,671	60,159,528
11. Net cash from operations (Line 4 minus Line 10)	1,207,845	1,863,631	6,168,958
Cash from Investments			
12. Proceeds from investments sold, matured or repaid:			
12.1 Bonds	2,806,832	685,000	2,819,000
12.2 Stocks		569,480	569,480
12.3 Mortgage loans			
12.4 Real estate			
12.5 Other invested assets			
12.6 Net gains or (losses) on cash, cash equivalents and short-term investments			
12.7 Miscellaneous proceeds	7,020	7,021	28,082
12.8 TOTAL investment proceeds (Lines 12.1 to 12.7)	2,813,852	1,261,500	3,416,562
13. Cost of investments acquired (long-term only):			
13.1 Bonds	1,006,011	1,820,306	5,773,464
13.2 Stocks	99,336	197,147	1,968,363
13.3 Mortgage loans			
13.4 Real estate	25,836		
13.5 Other invested assets			
13.6 Miscellaneous applications			
13.7 TOTAL investments acquired (Lines 13.1 to 13.6)	1,131,183	2,017,453	7,741,826
14. Net increase (or decrease) in contract loans and premium notes			
15. Net cash from investments (Line 12.8 minus Line 13.7 and Line 14)	1,682,669	(755,953)	(4,325,265)
Cash from Financing and Miscellaneous Sources			
16. Cash provided (applied):			
16.1 Surplus notes, capital notes			
16.2 Capital and paid in surplus, less treasury stock			
16.3 Borrowed funds	(972)		
16.4 Net deposits on deposit-type contracts and other insurance liabilities			
16.5 Dividends to stockholders			300,000
16.6 Other cash provided (applied)	18,166	(18,893)	17,548
17. Net cash from financing and miscellaneous sources (Line 16.1 through 16.4 minus Line 16.5 plus Line 16.6)	17,194	(18,893)	(282,452)
RECONCILIATION OF CASH, CASH EQUIVALENTS AND SHORT-TERM INVESTMENTS			
18. Net change in cash, cash equivalents and short-term investments (Line 11, plus Lines 15 and 17)	2,907,708	1,088,785	1,561,241
19. Cash, cash equivalents and short-term investments:			
19.1 Beginning of year	9,367,498	7,806,257	7,806,257
19.2 End of period (Line 18 plus Line 19.1)	12,275,206	8,895,042	9,367,498

Note: Supplemental Disclosures of Cash Flow Information for Non-Cash Transactions:

20.0001			
---------	--	--	--

Notes to Financial Statements**1. Summary of Significant Accounting Policies and Going Concern****A. Accounting Practices**

- A. The financial statements of United Home Insurance Company are presented on the basis of accounting practices prescribed or permitted by the Arkansas Insurance Department. The National Association of Insurance Commissioners' *Accounting Practices and Procedures Manual* has been adopted as a component of prescribed or permitted practices by the state of Arkansas.
- B. The preparation of financial statements in conformity with Statutory Accounting Principles requires management to make estimates and assumptions that affect the reported amounts of assets and liabilities. It also requires disclosure of contingent assets and liabilities at the date of financial statements and reported amounts of revenue and expenses during the period. Actual results could differ from those estimates.
- C. Premiums are earned over the terms of the related insurance policies and reinsurance contracts. Unearned premium reserves are established to cover the unexpired portion of premiums written. Such reserves are computed by pro rata methods for direct business and are based on reports received from ceding companies for reinsurance. Expenses incurred in connection with acquiring new insurance business, including such acquisition cost as sales commissions, are charged to operations as incurred. In addition, the company also uses the following accounting policies:
- Short term investments, if any, are listed at cost
 - Bonds are stated at amortized cost using the interest method.
 - Publicly traded common stocks, if any, are listed at market value
 - No preferred stock
 - No mortgage loans
 - Book value for mortgage-backed securities is the cost of remaining principal plus accrual of the discount or less amortization of the premium over the life of the bond to maturity
 - See # 3
 - No joint ventures, partnerships or LLC's
 - No derivatives
 - No anticipated investment income utilized in calculations
 - Case loss reserve estimates per onsite inspection of damage with IBNR tied to historical norms. There are no liability exposures to toxic waste, asbestos, etc.
 - Company has not changed its capitalization policy form prior period
 - No pharmaceutical rebate receivable

	SSAP #	F/S Page	F/S Line #	2022	2021
NET INCOME					
(1) State basis (Page 4, Line 20, Columns 1 & 3)	XXX	XXX	XXX	2,533,370	(2,763,474)
(2) State Prescribed Practices that are an increase/(decrease) from NAIC SAP:				0	0
(3) State Permitted Practices that are an increase/(decrease) from NAIC SAP:				0	0
(4) NAIC SAP (1-2-3=4)	XXX	XXX	XXX	2,533,370	(2,763,474)
SURPLUS					
(5) State basis (Page 3, Line 37, Columns 1 & 2)	XXX	XXX	XXX	20,095,744	18,116,759
(6) State Prescribed Practices that are an increase/(decrease) from NAIC SAP:				0	0
(7) State Permitted Practices that are an increase/(decrease) from NAIC SAP:				0	0
(8) NAIC SAP (5-6-7=8)	XXX	XXX	XXX	20,095,744	18,116,759

- D. The management of United Home Insurance Company does not have any going concerns about the Company's ability to continue.

2. Accounting Changes and Corrections of Errors

The Company did not have any material changes in accounting principles and/or corrections of errors.

3. Business Combinations and Goodwill

Not applicable. The Company did not have any business combinations.

4. Discontinued Operations

Not applicable. The Company did not discontinue any of its operations.

5. Investments**A. Mortgage Loans, including Mezzanine Real Estate Loans**

Not Applicable. The Company has no investments in real estate mortgage loans.

B. Debt Restructuring

Not Applicable. The Company did not have any debt investments restructured during 2022.

C. Reverse Mortgages

Not Applicable. The Company has no investments in reverse mortgages.

D. Loan-Backed Securities

Not Applicable. The Company has no investments in loan-backed securities.

E. Dollar Repurchase Agreements and/or Securities Lending Transactions

Not Applicable. The Company has no investments in repurchase agreement securities requiring collateral.

F. Repurchase Agreements Transactions Accounted for as Secured Borrowing

Not Applicable.

Notes to Financial Statements

G. Reverse Repurchase Agreements Transactions Accounted for as Secured Borrowing
Not Applicable.

H. Repurchase Agreements Transactions Accounted for as a Sale
Not Applicable.

I. Reverse Repurchase Agreements Transactions Accounted for as a Sale
Not Applicable

L. Restricted Assets**(1) Restricted Assets (Including Pledged)**

Restricted Asset Category	Gross (Admitted & Nonadmitted) Restricted					6	7	8	Current Year		
	Current Year								9	Percentage	
	1	2	3	4	5					10	11
Total General Account (G/A)	G/A Supporting Protected Cell Account Activity (a)	Total Protected Cell Account Restricted Assets	Protected Cell Account Assets Supporting G/A Activity (b)	Total (1 plus 3)	Total From Prior Year	Increase/ (Decrease) (5 minus 6)	Total Nonadmitted Restricted	Total Admitted Restricted (5 minus 8)	Gross (Admitted & Nonadmitted) Restricted to Total Assets (c)	Admitted Restricted to Total Admitted Assets (d)	
(a) Subject to contractual obligation for which liability is not shown	0	0	0	0	0	0	0	0	0	0.000	0.000
(b) Collateral held under security lending agreements	0	0	0	0	0	0	0	0	0	0.000	0.000
(c) Subject to repurchase agreements	0	0	0	0	0	0	0	0	0	0.000	0.000
(d) Subject to reverse repurchase agreements	0	0	0	0	0	0	0	0	0	0.000	0.000
(e) Subject to dollar repurchase agreements	0	0	0	0	0	0	0	0	0	0.000	0.000
(f) Subject to dollar reverse repurchase agreements	0	0	0	0	0	0	0	0	0	0.000	0.000
(g) Placed under option contracts	0	0	0	0	0	0	0	0	0	0.000	0.000
(h) Letter stock or securities restricted as to sale – excluding FHLB capital stock	0	0	0	0	0	0	0	0	0	0.000	0.000
(i) FHLB capital stock	0	0	0	0	0	0	0	0	0	0.000	0.000
(j) On deposit with states	2,820,713	0	0	0	2,820,713	2,821,087	(374)	0	2,820,713	4.335	4.362
(k) On deposit with other regulatory bodies	0	0	0	0	0	0	0	0	0	0.000	0.000
(l) Pledged as collateral to FHLB (including assets backing funding agreements)	0	0	0	0	0	0	0	0	0	0.000	0.000
(m) Pledged as collateral not captured in other categories	0	0	0	0	0	0	0	0	0	0.000	0.000
(n) Other restricted assets	0	0	0	0	0	0	0	0	0	0.000	0.000
(o) Total Restricted Assets	2,820,713	0	0	0	2,820,713	2,821,087	(374)	0	2,820,713	4.335	4.362

(a) Subset of column 1

(c) Column 5 divided by Asset Page Column 1, Line 28

(b) Subset of column 3

(d) Column 9 divided by Asset Page, Column 3, Line 28

M. Working Capital Finance Investments

Not Applicable

N. Offsetting and Netting of Assets and Liabilities

Not Applicable

O. 5GI Securities

Not Applicable

P. Short Sales

Not Applicable

Q. Prepayment Penalty and Acceleration Fees

Not Applicable

R. Reporting Entity's Share of Cash Pool by Asset type.

Not Applicable

6. Joint Ventures, Partnerships and Limited Liability Companies

A. The Company does not have any investments in joint ventures that exceed 10% of admitted assets.

B. The Company did not recognize any impairment in its joint ventures.

7. Investment Income

The Company does not have any investment income due and accrued over 90 days past due and does not have any amounts excluded from surplus.

8. Derivative Instruments

Not applicable. The Company does not invest in derivative type investments.

9. Income Taxes

A. The components of the net deferred tax asset/(liability) at March 31 are as follows:

Notes to Financial Statements

1.	Description	03/31/2022			12/31/2021			Change		
		(1) Ordinary	(2) Capital	(3) (Col. 1 + 2) Total	(4) Ordinary	(5) Capital	(6) (Col. 4 + 5) Total	(7) (Col. 1 - 4) Ordinary	(8) (Col. 2 - 5) Capital	(9) (Col. 7 + 8) Total
	(a) Gross Deferred Tax Assets	1,418,724	66,668	1,485,393	1,925,709	60,991	1,986,700	(506,985)	5,677	(501,307)
	(b) Statutory Valuation Allowance Adjustments	0	0	0	0	0	0	0	0	0
	(c) Adjusted Gross Deferred Tax Assets (1a - 1b)	1,418,724	66,668	1,485,393	1,925,709	60,991	1,986,700	(506,985)	5,677	(501,307)
	(d) Deferred Tax Assets Nonadmitted	0	0	0	0	0	0	0	0	0
	(e) Subtotal Net Admitted Deferred Tax Asset (1c - 1d)	1,418,724	66,668	1,485,393	1,925,709	60,991	1,986,700	(506,985)	5,677	(501,307)
	(f) Deferred Tax Liabilities	76,156	116,932	193,087	81,931	137,317	219,248	(5,775)	(20,385)	(26,161)
	(g) Net Admitted Deferred Tax Asset/(Net Deferred Tax Liability) (1e - 1f)	1,342,569	(50,263)	1,292,305	1,843,778	(76,326)	1,767,452	(501,209)	26,063	(475,147)

2.	Admission Calculation Components SSAP No. 101	03/31/2022			12/31/2021			Change		
		(1) Ordinary	(2) Capital	(3) (Col. 1 + 2) Total	(4) Ordinary	(5) Capital	(6) (Col. 4 + 5) Total	(7) (Col. 1 - 4) Ordinary	(8) (Col. 2 - 5) Capital	(9) (Col. 7 + 8) Total
	(a) Federal Income Taxes Paid In Prior Years Recoverable Through Loss Carrybacks	0	0	0	0	0	0	0	0	0
	(b) Adjusted Gross Deferred Tax Assets Expected To Be Realized (Excluding The Amount Of Deferred Tax Assets From 2(a) Above) After Application of the Threshold Limitation (The Lesser of 2(b)1 and 2(b)2 below)	1,418,724	55,574	1,474,299	1,925,709	49,897	1,975,606	(506,985)	5,677	(501,307)
	1. Adjusted Gross Deferred Tax Assets Expected to be Realized Following the Balance Sheet Date	0	0	0	0	0	0	0	0	0
	2. Adjusted Gross Deferred Tax Assets Allowed per Limitation Threshold	XXX	XXX	0	XXX	XXX	0	XXX	XXX	0
	(c) Adjusted Gross Deferred Tax Assets (Excluding The Amount Of Deferred Tax Assets From 2(a) and 2(b) above) Offset by Gross Deferred Tax Liabilities	0	11,094	11,094	0	11,094	11,094	0	0	0
	(d) Deferred Tax Assets Admitted as the result of application of SSAP No. 101 Total (2(a) + 2(b) + 2(c))	1,418,724	66,668	1,485,393	1,925,709	60,991	1,986,700	(506,985)	5,677	(501,307)

3.	Description	2022	2021
(a)	Ratio Percentage Used To Determine Recovery Period And Threshold Limitation Amount.	371.348	371.348
(b)	Amount Of Adjusted Capital And Surplus Used To Determine Recovery Period And Threshold Limitation in 2(b)2 Above.	16,349,307	16,349,307

4.	Impact of Tax-Planning Strategies	03/31/2022		12/31/2021		Change	
		(1) Ordinary	(2) Capital	(3) Ordinary	(4) Capital	(5) (Col. 1 - 3) Ordinary	(6) (Col. 2 - 4) Capital
	(a) Determination of adjusted gross deferred tax assets and net admitted deferred tax assets, by tax character as a percentage						
	1. Adjusted gross DTAs amount from Note 9A1(c)	1,418,724	66,668	1,925,709	60,991	(506,985)	5,677
	2. Percentage of adjusted gross DTAs by tax character attributable to the impact of tax planning strategies	0	0	0	0	0	0
	3. Net Admitted Adjusted Gross DTAs amount from Note 9A1(e)	1,418,724	66,668	1,925,709	60,991	(506,985)	5,677
	4. Percentage of net admitted adjusted gross DTAs by tax character admitted because of the impact of tax planning strategies	0	0	0	0	0	0

(b) Does the Company's tax-planning strategies include the use of reinsurance? Yes [] No[X]

B. Regarding deferred tax liabilities that are not recognized:

C. Current income taxes incurred consist of the following major components:

Description	(1) 03/31/2022	(2) 12/31/2021	(3) (Col. 1 - 2) Change
1. Current Income Tax			
(a) Federal	0	(579,352)	579,352
(b) Foreign	0	0	0
(c) Subtotal	0	(579,352)	579,352
(d) Federal income tax on net capital gains	0	0	0
(e) Utilization of capital loss carry-forwards	0	0	0
(f) Other	0	0	0
(g) Federal and foreign income taxes incurred	0	(579,352)	579,352
2. Deferred Tax Assets:			
(a) Ordinary			
(1) Discounting of unpaid losses	119,521	128,211	(8,690)
(2) Unearned premium reserve	1,305,108	1,229,240	75,868
(3) Policyholder reserves	0	0	0
(4) Investments	(116,932)	(137,317)	20,385
(5) Deferred acquisition costs	0	0	0
(6) Policyholder dividends accrual	0	0	0
(7) Fixed assets	0	0	0
(8) Compensation and benefits accrual	0	0	0
(9) Pension accrual	0	0	0
(10) Receivables - nonadmitted	0	0	0
(11) Net operating loss carry-forward	5,189	579,352	(574,163)
(12) Tax credit carry-forward	0	0	0
(13) Other (including items < 5% of total ordinary tax assets)	0	0	0
(99) Subtotal	1,312,887	1,799,486	(486,599)

Notes to Financial Statements

(b) Statutory valuation allowance adjustment	0	0	0
(c) Nonadmitted	0	0	0
(d) Admitted ordinary deferred tax assets (2a99 – 2b – 2c)	1,312,887	1,799,486	(486,599)
(e) Capital:			
(1) Investments	44,480	38,803	5,677
(2) Net capital loss carry-forward	11,094	11,094	0
(3) Real estate	0	0	0
(4) Other (including items < 5% of total capital tax assets)	0	0	0
(99) Subtotal	55,574	49,897	5,677
(f) Statutory valuation allowance adjustment	0	0	0
(g) Nonadmitted	0	0	0
(h) Admitted capital deferred tax assets (2e99 – 2f – 2g)	55,574	49,897	5,677
(i) Admitted deferred tax assets (2d + 2h)	1,368,461	1,849,383	(480,922)
3. Deferred Tax Liabilities:			
(a) Ordinary			
(1) Investments	0	0	0
(2) Fixed assets	76,156	81,931	(5,775)
(3) Deferred and uncollected premium	0	0	0
(4) Policyholder reserves	0	0	0
(5) Other (including items < 5% of total ordinary tax liabilities)	0	0	0
(99) Subtotal	76,156	81,931	(5,775)
(b) Capital:			
(1) Investments	0	0	0
(2) Real estate	0	0	0
(3) Other (including items < 5% of total capital tax liabilities)	0	0	0
(99) Subtotal	0	0	0
(c) Deferred tax liabilities (3a99 + 3b99)	76,156	81,931	(5,775)
4. Net deferred tax assets/liabilities (2i – 3c)	1,292,305	1,767,452	(475,147)

I. Alternative Minimum Tax Credit**10. Information Concerning Parent, Subsidiaries, Affiliates and Other Related Parties**

- A. As of March 31, 2022, all outstanding shares of the Company are owned by the parent company, Farmers Home Holding Company.
- B. United Home Insurance Company declared a dividend to Farmers Home Holding Company for \$300,000 on 12/13/2021. The dividend was paid on 12/23/2021. United Home Insurance Company is owned by the same parent company as Ford, Harris, and Lamb Insurance Agency, which writes business for United Home Insurance Company. United Home insurance Company had written premiums of \$18,498,155 of that \$304,403.00 was written by Ford Harris and Lamb. United Home Insurance Company paid \$46,025.91 in commission to Ford Harris and Lamb as of March 31, 2022.
- C. None
- D. None
- E. None
- F. None
- G. All outstanding shares of United Home Insurance Company are owned by the Parent Company, Farmers Home Holding Company, an insurance holding company domiciled in the state of Arkansas.
- H. Not Applicable.
- I. Not Applicable.
- J. Not Applicable.
- K. Not Applicable.
- L. Not Applicable.
- M. Not Applicable.
- N. Not Applicable.

11. Debt

- A. Debt
The company has no capital notes.
- B. FHLB (Federal Home Loan Bank) Agreements
Not Applicable.

12. Retirement Plans, Deferred Compensation, Postemployment Benefits and Compensated Absences and Other Postretirement Benefit Plans.

Not Applicable

13. Capital and Surplus, Dividend Restrictions and Quasi-Reorganizations

1. The Company has 1,000,000 shares authorized, 1,000,000 shares issued and 1,000,000 shares outstanding. All shares are Class A Shares. There are 1,000,000 shares of United Home Insurance Company common stock authorized and outstanding with a par value of \$2.50 per share
2. The Company has no preferred stock outstanding.
3. Without prior approval from the Arkansas Insurance Department, Dividends to shareholders are limited by the laws of the Company's state of incorporation, Arkansas, to 10% of surplus. However, since dividends paid by United Home to the holding company are used to retire debt, the Company is currently under an arrangement with the Arkansas Department not to pay any dividend without the written consent of the Department.
4. An ordinary dividend in the amount of \$300,000 was declared on 12/13/2021 by the company and paid on 12/23/2021.
5. Within the limitations of (3) above, there are no restrictions placed on the portion of Company profits that may be paid as ordinary dividends to stockholders.
6. There were no restrictions placed on the company's surplus, including for whom the surplus is being held.
7. The Arkansas Insurance Code requires that every company maintain a minimum surplus of \$750,000 (Section 2363-205 and 2363-207). By any amount that unassigned surplus does not equal the minimum, the Company agrees to recognize that amount of its paid in capital as surplus in order to meet the requirement.
8. The amounts of stock held by the Company, including stock of affiliated companies, for special purposes are: None

Notes to Financial Statements

9. The Company does not have any changes in balances of special surplus funds from the prior year.
 10. The portion of unassigned funds (surplus) represented or reduced by cumulative unrealized gains and losses is \$0.
 11. The Company does not have any surplus debentures or similar obligations.
 12. The Company does not have any restatement due to prior quasi-reorganizations.

14. Liabilities, Contingencies and Assessments

- A. **Contingent Commitments**
The Company has no commitments, contingent commitments or guarantees or commitments to provide additional capital contributions.
- B. **Assessments**
Not Applicable.
- C. **Gain Contingencies**
The Company has recorded no gain contingencies as of March 31, 2022.
- D. **Claims Related to Extra Contractual Obligations and Bad Faith Losses Stemming from Lawsuits**
The Company has no claims related to extra contractual obligations or bad faith losses.
- E. **Product Warranties**
Not Applicable.
- F. **Joint and Several Liabilities**
Not Applicable.
- G. **All Other Contingencies**
In the normal course of business, the Company is subject to various contingent liabilities, including possible income tax assessment resulting from issues raised by taxing or regulatory authorities in their regular examinations. Management does not anticipate any significant losses or costs to result from any known or existing contingencies.

There are no material legal proceedings other than those arising in the normal course of business and which generally pertain to claim matters relating to insurance policies and contracts issued by the Company.

15. Leases

- A. **Lessee Operating Lease**
Not Applicable.
- B. **Lessor Leases**
Not Applicable.

16. Information About Financial Instruments With Off-Balance-Sheet Risk And Financial Instruments With Concentrations of Credit Risk

The Company does not invest in swaps, futures, derivatives or options.

17. Sale, Transfer and Servicing of Financial Assets and Extinguishments of Liabilities

Not Applicable.

18. Gain or Loss to the Reporting Entity from Uninsured Plans and the Uninsured Portion of Partially Insured Plans

The Company does not write insurance for these types of A&H Plans.

19. Direct Premium Written/Produced by Managing General Agents/Third Party Administrators

Not Applicable.

20. Fair Value Measurements

- A.
 (1) Fair Value Measurements at Reporting Date

Description for each class of asset or liability	(Level 1)	(Level 2)	(Level 3)	Net Asset Value (NAV)	Total
a. Assets at fair value					
Common Stock	3,088,243	0	0	0	3,088,243
Total assets at fair value / NAV	3,088,243	0	0	0	3,088,243
b. Liabilities at fair value					
Total liabilities at fair value	0	0	0	0	0

21. Other Items

- A. **Unusual or Infrequent Items**
Not Applicable.
- B. **Troubled Debt Restructuring**
Not Applicable.
- C. **Other Disclosures**
Not Applicable
- D. **Business Interruption Insurance Recoveries**
Not Applicable
- E. **State Transferable and Non-transferable Tax Credits**
Not Applicable
- F. **Subprime-Mortgage-Related Risk Exposure**
Not Applicable

Notes to Financial Statements

- G. Insurance-Linked Securities (ILS) Contracts
Not Applicable

22. Events Subsequent

There were no material events subsequent to March 31, 2022.

23. Reinsurance**B. Reinsurance Recoverable in Dispute**

The Company has no reinsurance recoverable in dispute exceeding the disclosure requirement of 5% of policyholder's surplus for any one company or 10% of policyholder's surplus in the aggregate.

C. Reinsurance Assumed and Ceded

(1)

Description	Assumed Reinsurance		Ceded Reinsurance		Net	
	Premium Reserve	Commission Equity	Premium Reserve	Commission Equity	Premium Reserves	Commission Equity
a. Affiliates	0	0	0	0	0	0
b. All Other	0	0	2,538,830	738,091	(2,538,830)	(738,091)
c. TOTAL	0	0	2,538,830	738,091	(2,538,830)	(738,091)
d. Direct Unearned Premium Reserve			33,612,831			

Line (c) of Ceded Reinsurance Premium Reserve Column must equal Page 3, Line 9, first inside amount.

(2)

(3)

D. Uncollectible Reinsurance

The Company has not written off any reinsurance balance during the current calendar year.

E. Commutation of Ceded Reinsurance

The Company has not commuted any reinsurance balance during the current calendar year.

F. Retroactive Reinsurance

The Company has not entered into any retroactive reinsurance agreements during the current calendar year.

G. Reinsurance Accounted for as a Deposit

Not Applicable.

I. Certified Reinsurer Rating Downgraded or Status Subject to Revocation

Not Applicable.

J. Reinsurance Agreements Qualifying for Reinsurer Aggregation

Not Applicable.

24. Retrospectively Rated Contracts & Contracts Subject to Redetermination

The Company does not participate in this type of business.

25. Changes in Incurred Losses and Loss Adjustment Expenses

Reserves for losses and loss adjustment expenses as of December 31, 2021 were \$11,181,250. As of March 31, 2022, \$6,976,371.28 has been paid for incurred losses and loss adjustment expenses attributable to insured events of prior years. Reserves remaining for prior years are now \$4,190,776.74 as a result of re-estimation of unpaid claims and claim adjustment expenses. Therefore, there has been no favorable prior year development from December 31, 2021 to March 31, 2022. The change is generally the result of ongoing analysis of the recent loss development trends. Original estimates are increased or decreased as additional information becomes known regarding individual claims.

26. Intercompany Pooling Arrangements

The Company does not participate in any intercompany pooling arrangements.

27. Structured Settlements

Not Applicable.

28. Health Care Receivables

Not Applicable.

29. Participating Policies

Notes to Financial Statements

Not Applicable.

30. Premium Deficiency Reserves

As of March 31, 2022, the Company did not have any liabilities related to premium deficiency reserves.

31. High Deductibles

Not Applicable.

32. Discounting of Liabilities for Unpaid Losses or Unpaid Loss Adjustment Expenses

The Company does not discount liabilities for unpaid losses and loss adjustment expenses.

33. Asbestos/Environmental Reserves

The Company does not have exposure to asbestos or environmental claims.

34. Subscriber Savings Accounts

The Company does not utilize subscriber savings accounts.

35. Multiple Peril Crop Insurance

The Company does not write Multiple Peril Crop Insurance.

36. Financial Guaranty Insurance

The Company does not write Financial Guaranty Insurance.

GENERAL INTERROGATORIES

PART 1 - COMMON INTERROGATORIES GENERAL

- 1.1 Did the reporting entity experience any material transactions requiring the filing of Disclosure of Material Transactions with the State of Domicile, as required by the Model Act? Yes[] No[X]
- 1.2 If yes, has the report been filed with the domiciliary state? Yes[] No[] N/A[X]

- 2.1 Has any change been made during the year of this statement in the charter, by-laws, articles of incorporation, or deed of settlement of the reporting entity? Yes[] No[X]
- 2.2 If yes, date of change:

- 3.1 Is the reporting entity a member of an Insurance Holding Company System consisting of two or more affiliated persons, one or more of which is an insurer? Yes[] No[X]
If yes, complete Schedule Y, Parts 1 and 1A.
- 3.2 Have there been any substantial changes in the organizational chart since the prior quarter end? Yes[] No[X]
- 3.3 If the response to 3.2 is yes, provide a brief description of those changes: Yes[] No[X]
- 3.4 Is the reporting entity publicly traded or a member of a publicly traded group? Yes[] No[X]
- 3.5 If the response to 3.4 is yes, provide the CIK (Central Index Key) code issued by the SEC for the entity/group. Yes[] No[X]

- 4.1 Has the reporting entity been a party to a merger or consolidation during the period covered by this statement? Yes[] No[X]
- 4.2 If yes, provide the name of entity, NAIC Company Code, and state of domicile (use two letter state abbreviation) for any entity that has ceased to exist as a result of the merger or consolidation.

1 Name of Entity	2 NAIC Company Code	3 State of Domicile
.....

- 5. If the reporting entity is subject to a management agreement, including third-party administrator(s), managing general agent(s), attorney-in-fact, or similar agreement, have there been any significant changes regarding the terms of the agreement or principals involved? Yes[] No[] N/A[X]
If yes, attach an explanation.

- 6.1 State as of what date the latest financial examination of the reporting entity was made or is being made. 12/31/2018
- 6.2 State the as of date that the latest financial examination report became available from either the state of domicile or the reporting entity. This date should be the date of the examined balance sheet and not the date the report was completed or released. 12/31/2018
- 6.3 State as of what date the latest financial examination report became available to other states or the public from either the state of domicile or the reporting entity. This is the release date or completion date of the examination report and not the date of the examination (balance sheet date). 06/09/2020
- 6.4 By what department or departments?
Arkansas Insurance Department
- 6.5 Have all financial statement adjustments within the latest financial examination report been accounted for in a subsequent financial statement filed with Departments? Yes[] No[] N/A[X]
- 6.6 Have all of the recommendations within the latest financial examination report been complied with? Yes[] No[] N/A[X]

- 7.1 Has this reporting entity had any Certificates of Authority, licenses or registrations (including corporate registration, if applicable) suspended or revoked by any governmental entity during the reporting period? Yes[] No[X]
- 7.2 If yes, give full information

- 8.1 Is the company a subsidiary of a bank holding company regulated by the Federal Reserve Board? Yes[] No[X]
- 8.2 If response to 8.1 is yes, please identify the name of the bank holding company.
- 8.3 Is the company affiliated with one or more banks, thrifts or securities firms? Yes[] No[X]
- 8.4 If response to 8.3 is yes, please provide below the names and location (city and state of the main office) of any affiliates regulated by a federal regulatory services agency [i.e. the Federal Reserve Board (FRB), the Office of the Comptroller of the Currency (OCC), the Federal Deposit Insurance Corporation (FDIC) and the Securities Exchange Commission (SEC)] and identify the affiliate's primary federal regulator.]

1 Affiliate Name	2 Location (City, State)	3 FRB	4 OCC	5 FDIC	6 SEC
.....

- 9.1 Are the senior officers (principal executive officer, principal financial officer, principal accounting officer or controller, or persons performing similar functions) of the reporting entity subject to a code of ethics, which includes the following standards? Yes[X] No[]
 - (a) Honest and ethical conduct, including the ethical handling of actual or apparent conflicts of interest between personal and professional relationships;
 - (b) Full, fair, accurate, timely and understandable disclosure in the periodic reports required to be filed by the reporting entity;
 - (c) Compliance with applicable governmental laws, rules and regulations;
 - (d) The prompt internal reporting of violations to an appropriate person or persons identified in the code; and
 - (e) Accountability for adherence to the code.
- 9.11 If the response to 9.1 is No, please explain: Yes[] No[X]
- 9.2 Has the code of ethics for senior managers been amended? Yes[] No[X]
- 9.21 If the response to 9.2 is Yes, provide information related to amendment(s).
- 9.3 Have any provisions of the code of ethics been waived for any of the specified officers? Yes[] No[X]
- 9.31 If the response to 9.3 is Yes, provide the nature of any waiver(s).

FINANCIAL

- 10.1 Does the reporting entity report any amounts due from parent, subsidiaries or affiliates on Page 2 of this statement? Yes[] No[X]
- 10.2 If yes, indicate any amounts receivable from parent included in the Page 2 amount: \$ 0

INVESTMENT

- 11.1 Were any of the stocks, bonds, or other assets of the reporting entity loaned, placed under option agreement, or otherwise made available for use by another person? (Exclude securities under securities lending agreements.) Yes[] No[X]
- 11.2 If yes, give full and complete information relating thereto:

- 12. Amount of real estate and mortgages held in other invested assets in Schedule BA: \$ 0
- 13. Amount of real estate and mortgages held in short-term investments: \$ 0

- 14.1 Does the reporting entity have any investments in parent, subsidiaries and affiliates? Yes[] No[X]
- 14.2 If yes, please complete the following:

GENERAL INTERROGATORIES (Continued)

	1 Prior Year-End Book/Adjusted Carrying Value	2 Current Quarter Book/Adjusted Carrying Value
14.21 Bonds		
14.22 Preferred Stock		
14.23 Common Stock		
14.24 Short-Term Investments		
14.25 Mortgages Loans on Real Estate		
14.26 All Other		
14.27 Total Investment in Parent, Subsidiaries and Affiliates (Subtotal Lines 14.21 to 14.26)		
14.28 Total Investment in Parent included in Lines 14.21 to 14.26 above		

15.1 Has the reporting entity entered into any hedging transactions reported on Schedule DB? Yes No
 15.2 If yes, has a comprehensive description of the hedging program been made available to the domiciliary state? Yes No N/A
 If no, attach a description with this statement.

16. For the reporting entity's security lending program, state the amount of the following as of the current statement date:
 16.1 Total fair value of reinvested collateral assets reported on Schedule DL, Parts 1 and 2 \$ 0
 16.2 Total book adjusted/carrying value of reinvested collateral assets reported on Schedule DL, Parts 1 and 2 \$ 0
 16.3 Total payable for securities lending reported on the liability page \$ 0

17. Excluding items in Schedule E - Part 3 - Special Deposits, real estate, mortgage loans and investments held physically in the reporting entity's offices, vaults or safety deposit boxes, were all stocks, bonds and other securities, owned throughout the current year held pursuant to a custodial agreement with a qualified bank or trust company in accordance with Section 1, III - General Examination Considerations, F. Outsourcing of Critical Functions, Custodial or Safekeeping Agreements of the NAIC Financial Condition Examiners Handbook? Yes No
 17.1 For all agreements that comply with the requirements of the NAIC Financial Condition Examiners Handbook, complete the following:

1 Name of Custodian(s)	2 Custodian Address
Centennial Bank Trust Department	2901 E Highland Dr, Jonesboro, AR 72401
Arkansas Bankers Bank	1020 West 2nd Street, Little Rock, AR 72201
Central Bank	238 Madison Street, Jefferson City MO 65102

17.2 For all agreements that do not comply with the requirements of the NAIC Financial Condition Examiners Handbook, provide the name, location and a complete explanation:

1 Name(s)	2 Location(s)	3 Complete Explanation(s)
.....

17.3 Have there been any changes, including name changes, in the custodian(s) identified in 17.1 during the current quarter? Yes No
 17.4 If yes, give full and complete information relating thereto:

1 Old Custodian	2 New Custodian	3 Date of Change	4 Reason
.....

17.5 Investment management - Identify all investment advisors, investment managers, broker/dealers, including individuals that have the authority to make investment decisions on behalf of the reporting entity. For assets that are managed internally by employees of the reporting entity, note as such. ["...that have access to the investment accounts"; "...handle securities"]

1 Name of Firm or Individual	2 Affiliation
.....

17.5097 For those firms/individuals listed in the table for Question 17.5, do any firms/individuals unaffiliated with the reporting entity (i.e. designated with a "U") manage more than 10% of the reporting entity's invested assets? Yes No

17.5098 For firms/individuals unaffiliated with the reporting entity (i.e. designated with a "U") listed in the table for Question 17.5, does the total assets under management aggregate to more than 50% of the reporting entity's invested assets? Yes No

17.6 For those firms or individuals listed in the table for 17.5 with an affiliation code of "A" (affiliated) or "U" (unaffiliated), provide the information for the table below.

1 Central Registration Depository Number	2 Name of Firm or Individual	3 Legal Entity Identifier (LEI)	4 Registered With	5 Investment Management Agreement (IMA) Filed
.....

18.1 Have all the filing requirements of the Purposes and Procedures Manual of the NAIC Investment Analysis Office been followed? Yes No
 18.2 If no, list exceptions:

19. By self-designating 5GI securities, the reporting entity is certifying the following elements for each self-designated 5GI security:
 a. Documentation necessary to permit a full credit analysis of the security does not exist or an NAIC CRP credit rating for an FE or PL security is not available.
 b. Issuer or obligor is current on all contracted interest and principal payments.
 c. The insurer has an actual expectation of ultimate payment of all contracted interest and principal.
 Has the reporting entity self-designated 5GI securities? Yes No

20. By self-designating PLGI securities, the reporting entity is certifying the following elements of each self-designated PLGI security:
 a. The security was purchased prior to January 1, 2018.
 b. The reporting entity is holding capital commensurate with the NAIC Designation reported for the security.
 c. The NAIC Designation was derived from the credit rating assigned by an NAIC CRP in its legal capacity as a NRSRO which is shown on a current private letter rating held by the insurer and available for examination by state insurance regulators.
 d. The reporting entity is not permitted to share this credit rating of the PL security with the SVO.

GENERAL INTERROGATORIES (Continued)

Has the reporting entity self-designated PLGI securities?

Yes[] No[X]

21. By assigning FE to a Schedule BA non-registered private fund, the reporting entity is certifying the following elements of each self-designated FE fund:

- a. The shares were purchased prior to January 1, 2019.
- b. The reporting entity is holding capital commensurate with the NAIC Designation reported for the security
- c. The security had a public credit rating(s) with annual surveillance assigned by an NAIC CRP in its legal capacity as an NRSRO prior to January 1, 2019.
- d. The fund only or predominantly holds bonds in its portfolio.
- e. The current reported NAIC Designation was derived from the public credit rating(s) with annual surveillance assigned by an NAIC CRP in its legal capacity as an NRSRO.
- f. The public credit rating(s) with annual surveillance assigned by an NAIC CRP has not lapsed.

Has the reporting entity assigned FE to Schedule BA non-registered private funds that complied with the above criteria?

Yes[] No[X]

GENERAL INTERROGATORIES

PART 2 - PROPERTY & CASUALTY INTERROGATORIES

1. If the reporting entity is a member of a pooling arrangement, did the agreement or the reporting entity's participation change?
If yes, attach an explanation. Yes[] No[] N/A[X]
2. Has the reporting entity reinsured any risk with any other reporting entity and agreed to release such entity from liability, in whole or in part, from any loss that may occur on the risk, or portion thereof, reinsured?
If yes, attach an explanation. Yes[] No[X]
- 3.1 Have any of the reporting entity's primary reinsurance contracts been canceled? Yes[] No[X]
- 3.2 If yes, give full and complete information thereto
- 4.1 Are any of the liabilities for unpaid losses and loss adjustment expenses other than certain workers' compensation tabular reserves (see annual statement instructions pertaining to disclosure of discounting for definition of "tabular reserves,") discounted at a rate of interest greater than zero? Yes[] No[X]
- 4.2 If yes, complete the following schedule:

1 Line of Business	2 Maximum Interest	3 Discount Rate	TOTAL DISCOUNT				DISCOUNT TAKEN DURING PERIOD			
			4 Unpaid Losses	5 Unpaid LAE	6 IBNR	7 TOTAL	8 Unpaid Losses	9 Unpaid LAE	10 IBNR	11 TOTAL
04.2999 Total

5. Operating Percentages:
- 5.1 A&H loss percent 0.000%
- 5.2 A&H cost containment percent 0.000%
- 5.3 A&H expense percent excluding cost containment expenses 0.000%
- 6.1 Do you act as a custodian for health savings accounts? Yes[] No[X]
- 6.2 If yes, please provide the amount of custodial funds held as of the reporting date. \$ 0
- 6.3 Do you act as an administrator for health savings accounts? Yes[] No[X]
- 6.4 If yes, please provide the balance of the funds administered as of the reporting date. \$ 0
7. Is the reporting entity licensed or chartered, registered, qualified, eligible or writing business in at least two states? Yes[X] No[]
- 7.1 If no, does the reporting entity assume reinsurance business that covers risks residing in at least one state other than the state of domicile of the reporting entity? Yes[] No[X]

SCHEDULE F - CEDED REINSURANCE

Showing all new reinsurers - Current Year to Date

1 NAIC Company Code	2 ID Number	3 Name of Reinsurer	4 Domiciliary Jurisdiction	5 Type of Reinsurer	6 Certified Reinsurer Rating (1 through 6)	7 Effective Date of Certified Reinsurer Rating
U.S. insurers						
10166	38-3207001	ACCIDENT FUND INS CO OF AMER	MI	Authorized	3	
All other insurers						
00000	AA-3191190	Hamilton Re Ltd	BMU	Unauthorized	5	
00000	AA-1120157	Lloyd's Syndicate Number 1729	GBR	Authorized	3	
00000	AA-1126004	Lloyd's Syndicate Number 4444	GBR	Authorized	3	

SCHEDULE T - EXHIBIT OF PREMIUMS WRITTEN**Current Year to Date - Allocated by States and Territories**

States, etc.	1 Active Status (a)	Direct Premiums Written		Direct Losses Paid (Deducting Salvage)		Direct Losses Unpaid	
		2 Current Year To Date	3 Prior Year To Date	4 Current Year To Date	5 Prior Year To Date	6 Current Year To Date	7 Prior Year To Date
1. Alabama (AL)	N						
2. Alaska (AK)	N						
3. Arizona (AZ)	N						
4. Arkansas (AR)	L	6,860,985	6,796,566	6,149,793	5,145,753	5,706,582	5,756,121
5. California (CA)	N						
6. Colorado (CO)	N						
7. Connecticut (CT)	N						
8. Delaware (DE)	N						
9. District of Columbia (DC)	N						
10. Florida (FL)	N						
11. Georgia (GA)	N						
12. Hawaii (HI)	N						
13. Idaho (ID)	N						
14. Illinois (IL)	L						
15. Indiana (IN)	L						
16. Iowa (IA)	N						
17. Kansas (KS)	L						
18. Kentucky (KY)	L	3,250,267	2,864,268	4,567,654	1,552,505	3,168,213	1,480,427
19. Louisiana (LA)	N						
20. Maine (ME)	N						
21. Maryland (MD)	N						
22. Massachusetts (MA)	N						
23. Michigan (MI)	N						
24. Minnesota (MN)	N						
25. Mississippi (MS)	N						
26. Missouri (MO)	L	3,461,423	2,905,191	1,701,094	1,751,318	2,449,510	2,198,802
27. Montana (MT)	N						
28. Nebraska (NE)	N						
29. Nevada (NV)	N						
30. New Hampshire (NH)	N						
31. New Jersey (NJ)	N						
32. New Mexico (NM)	N						
33. New York (NY)	N						
34. North Carolina (NC)	N						
35. North Dakota (ND)	N						
36. Ohio (OH)	N						
37. Oklahoma (OK)	L	4,101,369	3,737,716	1,724,196	2,255,868	1,613,081	2,106,630
38. Oregon (OR)	N						
39. Pennsylvania (PA)	N						
40. Rhode Island (RI)	N						
41. South Carolina (SC)	N						
42. South Dakota (SD)	N						
43. Tennessee (TN)	L	824,111	520,563	967,022	275,313	294,704	94,883
44. Texas (TX)	L						
45. Utah (UT)	N						
46. Vermont (VT)	N						
47. Virginia (VA)	N						
48. Washington (WA)	N						
49. West Virginia (WV)	N						
50. Wisconsin (WI)	N						
51. Wyoming (WY)	N						
52. American Samoa (AS)	N						
53. Guam (GU)	N						
54. Puerto Rico (PR)	N						
55. U.S. Virgin Islands (VI)	N						
56. Northern Mariana Islands (MP)	N						
57. Canada (CAN)	N						
58. Aggregate other alien (OT)	X X X						
59. Totals	X X X	18,498,155	16,824,304	15,109,760	10,980,757	13,232,091	11,636,863
DETAILS OF WRITE-INS							
58001	X X X						
58002	X X X						
58003	X X X						
58998 Summary of remaining write-ins for Line 58 from overflow page	X X X						
58999 TOTALS (Lines 58001 through 58003 plus 58998) (Line 58 above)	X X X						

(a) Active Status Counts:

L - Licensed or Chartered - Licensed insurance carrier or domiciled RRG

E - Eligible - Reporting entities eligible or approved to write surplus lines in the state (other than their state of domicile - See DSLI)

D - Domestic Surplus Lines Insurer (DSLII) - Reporting entities authorized to write surplus lines in the state of domicile.

9

R - Registered - Non-domiciled RRGs

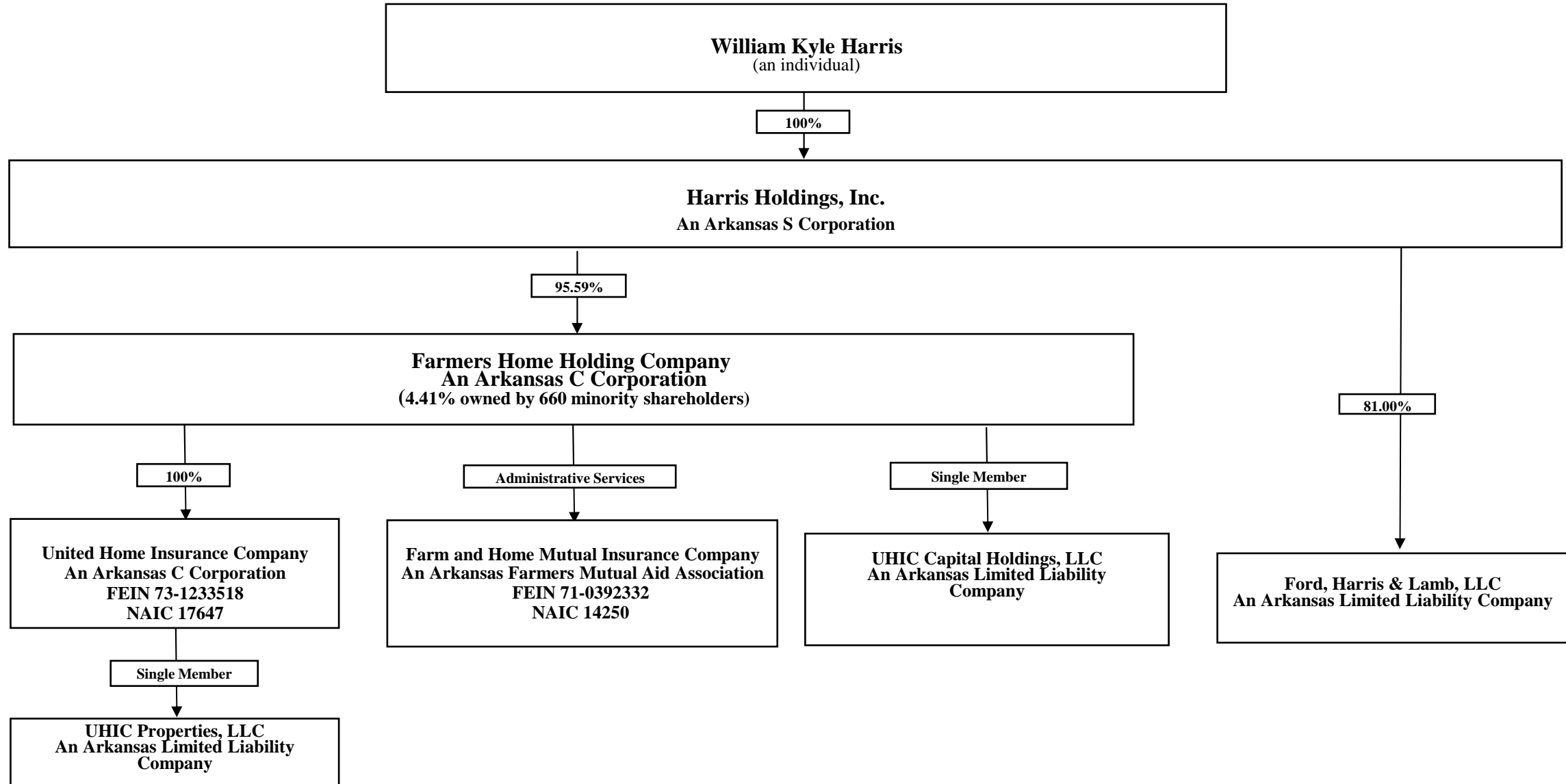
Q - Qualified - Qualified or accredited reinsurer

N - None of the above - Not allowed to write business in the state

48

SCHEDULE Y - INFORMATION CONCERNING ACTIVITIES OF INSURER
MEMBERS OF A HOLDING COMPANY GROUP
PART 1 - ORGANIZATIONAL CHART

Q11



SCHEDULE Y

PART 1A - DETAIL OF INSURANCE HOLDING COMPANY SYSTEM

1	2	3	4	5	6	7	8	9	10	11	12	13	14	15	16
Group Code	Group Name	NAIC Company Code	ID Number	FEDERAL RSSD	CIK	Name of Securities Exchange if Publicly Traded (U.S. or International)	Names of Parent, Subsidiaries or Affiliates	Domiciliary Location	Relationship to Reporting Entity	Directly Controlled by (Name of Entity / Person)	Type of Control (Ownership, Board, Management, Attorney-in-Fact, Influence, Other)	If Control is Ownership Provide Percentage	Ultimate Controlling Entity(ies) / Person(s)	Is an SCA Filing Required? (Yes/No)	*
0000	None	00000	71-0830390				Harris Holdings Inc	AR	UIP	William Kyle Harris	Ownership, Management	100.0	William Kyle Harris	No	
		00000	20-3097003				Farmers Home Holding Company	AR	UDP	Harris Holdings Inc		95.6	Harris Holdings Inc	No	
		17647	73-1233518				United Home Insurance Company	AR	UDP	Farmers Home Holding Company		100.0	Harris Holdings Inc	No	
		00000	47-5373721				UHIC Properties, LLC	AR	UDP	United Home Insurance Company		100.0	Harris Holdings Inc	No	
		00000	81-4872550				UHIC Capital Holdings, LLC	AR	UDP	Farmers Home Holding Company		100.0	Harris Holdings Inc	No	

Asterisk	Explanation
0000001	

PART 1 - LOSS EXPERIENCE

	Line of Business	Current Year to Date			4 Prior Year to Date Direct Loss Percentage
		1 Direct Premiums Earned	2 Direct Losses Incurred	3 Direct Loss Percentage	
1.	Fire	260,034	240,964	92.666	106.232
2.1	Allied lines	399,764	215,405	53.883	46.591
2.2	Multiple peril crop				
2.3	Federal flood				
2.4	Private crop				
2.5	Private flood				
3.	Farmowners multiple peril	410,048	242,669	59.181	19.136
4.	Homeowners multiple peril	10,017,195	8,272,508	82.583	80.738
5.	Commercial multiple peril				
6.	Mortgage guaranty				
8.	Ocean marine				
9.	Inland marine				
10.	Financial guaranty				
11.1	Medical professional liability - occurrence				
11.2	Medical professional liability - claims made				
12.	Earthquake				
13.1	Comprehensive (hospital and medical) individual				
13.2	Comprehensive (hospital and medical) group				
14.	Credit accident and health				
15.1	Vision only				
15.2	Dental only				
15.3	Disability income				
15.4	Medicare supplement				
15.5	Medicaid Title XIX				
15.6	Medicare Title XVIII				
15.7	Long-term care				
15.8	Federal employees health benefits plan				
15.9	Other health				
16.	Workers' compensation				
17.1	Other liability - occurrence	73,272	(8,740)	(11.929)	21.447
17.2	Other liability - claims made				
17.3	Excess Workers' Compensation				
18.1	Products liability - occurrence				
18.2	Products liability - claims made				
19.1	Private passenger auto no-fault (personal injury protection)	324,866	111,825	34.422	
19.2	Other private passenger auto liability	2,284,637	985,861	43.152	
19.3	Commercial auto no-fault (personal injury protection)				
19.4	Other Commercial auto liability				
21.1	Private passenger auto physical damage	2,911,634	1,740,881	59.791	
21.2	Commercial auto physical damage				
22.	Aircraft (all perils)				
23.	Fidelity				
24.	Surety				
26.	Burglary and theft	10,316			5.754
27.	Boiler and machinery				
28.	Credit				
29.	International				
30.	Warranty				
31.	Reinsurance-Nonproportional Assumed Property	X X X	X X X	X X X	X X X
32.	Reinsurance-Nonproportional Assumed Liability	X X X	X X X	X X X	X X X
33.	Reinsurance-Nonproportional Assumed Financial Lines	X X X	X X X	X X X	X X X
34.	Aggregate write-ins for other lines of business				
35.	TOTALS	16,691,765	11,801,373	70.702	65.642
DETAILS OF WRITE-INS					
3401.				
3402.				
3403.				
3498.	Summary of remaining write-ins for Line 34 from overflow page				
3499.	TOTALS (Lines 3401 through 3403 plus 3498) (Line 34 above)				

PART 2 - DIRECT PREMIUMS WRITTEN

Line of Business		1 Current Quarter	2 Current Year to Date	3 Prior Year Year to Date
1.	Fire	303,614	303,614	301,960
2.1	Allied lines	466,159	466,159	464,487
2.2	Multiple peril crop			
2.3	Federal flood			
2.4	Private crop			
2.5	Private flood			
3.	Farmowners multiple peril	412,483	412,483	431,740
4.	Homeowners multiple peril	10,226,946	10,226,946	9,454,512
5.	Commercial multiple peril			
6.	Mortgage guaranty			
8.	Ocean marine			
9.	Inland marine			
10.	Financial guaranty			
11.1	Medical professional liability - occurrence			
11.2	Medical professional liability - claims made			
12.	Earthquake			
13.1	Comprehensive (hospital and medical) individual			
13.2	Comprehensive (hospital and medical) group			
14.	Credit accident and health			
15.1	Vision only			
15.2	Dental only			
15.3	Disability income			
15.4	Medicare supplement			
15.5	Medicaid Title XIX			
15.6	Medicare Title XVIII			
15.7	Long-term care			
15.8	Federal employees health benefits plan			
15.9	Other health			
16.	Workers' compensation			
17.1	Other liability - occurrence	79,809	79,809	70,776
17.2	Other liability - claims made			
17.3	Excess Workers' Compensation			
18.1	Products liability - occurrence			
18.2	Products liability - claims made			
19.1	Private passenger auto no-fault (personal injury protection)	310,814	310,814	343,231
19.2	Other private passenger auto liability	2,848,563	2,848,563	2,524,255
19.3	Commercial auto no-fault (personal injury protection)			
19.4	Other Commercial auto liability			
21.1	Private passenger auto physical damage	3,839,913	3,839,913	3,222,930
21.2	Commercial auto physical damage			
22.	Aircraft (all perils)			
23.	Fidelity			
24.	Surety			
26.	Burglary and theft	9,853	9,853	10,414
27.	Boiler and machinery			
28.	Credit			
29.	International			
30.	Warranty			
31.	Reinsurance-Nonproportional Assumed Property	X X X	X X X	X X X
32.	Reinsurance-Nonproportional Assumed Liability	X X X	X X X	X X X
33.	Reinsurance-Nonproportional Assumed Financial Lines	X X X	X X X	X X X
34.	Aggregate write-ins for other lines of business			
35.	TOTALS	18,498,155	18,498,155	16,824,304
DETAILS OF WRITE-INS				
3401.			
3402.			
3403.			
3498.	Summary of remaining write-ins for Line 34 from overflow page			
3499.	TOTALS (Lines 3401 through 3403 plus 3498) (Line 34 above)			

PART 3 (000 omitted)
LOSS AND LOSS ADJUSTMENT EXPENSE RESERVES SCHEDULE

	1	2	3	4	5	6	7	8	9	10	11	12	13
Years in Which Losses Occurred	Prior Year-End Known Case Loss and LAE Reserves	Prior Year-End IBNR Loss and LAE Reserves	Total Prior Year-End Loss and LAE Reserves (Cols. 1 + 2)	2022 Loss and LAE Payments on Claims Reported as of Prior Year-End	2022 Loss and LAE Payments on Claims Unreported as of Prior Year-End	Total 2022 Loss and LAE Payments (Cols. 4 + 5)	Q.S. Date Known Case Loss and LAE Reserves on Claims Reported and Open as of Prior Year-End	Q.S. Date Known Case Loss and LAE Reserves on Claims Reported or Reopened Subsequent to Prior Year-End	Q.S. Date IBNR Loss and LAE Reserves	Total Q.S. Loss and LAE Reserves (Cols. 7 + 8 + 9)	Prior Year-End Known Case Loss and LAE Reserves Developed (Savings)/ Deficiency (Cols. 4 + 7 minus Col. 1)	Prior Year-End IBNR Loss and LAE Reserves Developed (Savings)/ Deficiency (Cols. 5 + 8 + 9 minus Col. 2)	Prior Year-End Total Loss and LAE Reserves Developed (Savings)/ Deficiency (Cols. 11 + 12)
1. 2019 + Prior	390	752	1,142	216		216	359	13	142	514	186	(598)	(412)
2. 2020	883	877	1,760	454	97	551	620	34	412	1,066	191	(334)	(143)
3. Subtotals 2020 + Prior	1,272	1,629	2,902	670	97	767	979	46	554	1,580	377	(932)	(555)
4. 2021	4,365	3,915	8,280	2,506	1,558	4,064	2,008	678	2,281	4,967	150	602	752
5. Subtotals 2021 + Prior	5,637	5,544	11,181	3,176	1,655	4,831	2,988	724	2,835	6,547	527	(330)	197
6. 2022	X X X	X X X	X X X	X X X	4,840	4,840	X X X	2,329	1,371	3,700	X X X	X X X	X X X
7. Totals	5,637	5,544	11,181	3,176	6,495	9,671	2,988	3,053	4,206	10,247	527	(330)	197
8. Prior Year-End Surplus As Regards Policyholders	18,116,759										Col. 11, Line 7 As % of Col. 1 Line 7 1..... 9.345	Col. 12, Line 7 As % of Col. 2 Line 7 2..... (5.947)	Col. 13, Line 7 As % of Col. 3 Line 7 3..... 1.762
													Col. 13, Line 7 Line 8 4..... 0.001

SUPPLEMENTAL EXHIBITS AND SCHEDULES INTERROGATORIES

The following supplemental reports are required to be filed as part of your statement filing. However, in the event that your company does not transact the type of business for which the special report must be filed, your response of NO to the specific interrogatory will be accepted in lieu of filing a "NONE" report and a bar code will be printed below. If the supplement is required of your company but is not being filed for whatever reason enter SEE EXPLANATION and provide an explanation following the interrogatory questions.

	RESPONSES
1. Will the Trusteed Surplus Statement be filed with the state of domicile and the NAIC with this statement?	No
2. Will Supplement A to Schedule T (Medical Professional Liability Supplement) be filed with this statement?	No
3. Will the Medicare Part D Coverage Supplement be filed with the state of domicile and the NAIC with this statement?	No
4. Will the Director and Officer Insurance Coverage Supplement be filed with the state of domicile and the NAIC with this statement?	No

AUGUST FILING

5. Will the regulator-only (non-public) Communication of Internal Control Related Matters Noted in Audit be filed with the state of domicile and electronically with the NAIC (as a regulator-only non-public document) by August 1? The response for 1st and 3rd quarters should be N/A. A NO response resulting with a bar code is only appropriate in the 2nd quarter.	N/A
---	-----

Explanations:

Bar Codes:

Trusteed Surplus Statement



17647202249000001

2022

Document Code: 490

Supplement A to Schedule T



17647202245500001

2022

Document Code: 455

Medicare Part D Coverage Supplement



17647202236500001

2022

Document Code: 365

Director and Officer Supplement



17647202250500001

2022

Document Code: 505

STATEMENT OF INCOME

	1 Current Year to Date	2 Prior Year to Date	3 Prior Year Ended December 31
0597. Summary of remaining write-ins for Line 5 (Lines 0504 through 0596)			
1404.			
1497. Summary of remaining write-ins for Line 14 (Lines 1404 through 1496)			
3704.			
3705.			
3706.			
3707.			
3708.			
3709.			
3710.			
3711.			
3712.			
3713.			
3714.			
3715.			
3797. Summary of remaining write-ins for Line 37 (Lines 3704 through 3796)			

STATEMENT AS OF **March 31, 2022** OF THE **United Home Insurance Company**
SCHEDULE A - VERIFICATION

Real Estate

	1	2
	Year To Date	Prior Year Ended December 31
1. Book/adjusted carrying value, December 31 of prior year	3,642,368	3,670,451
2. Cost of acquired:		
2.1 Actual cost at time of acquisition	25,836	
2.2 Additional investment made after acquisition		
3. Current year change in encumbrances		
4. Total gain (loss) on disposals		
5. Deduct amounts received on disposals		
6. Total foreign exchange change in book/adjusted carrying value		
7. Deduct current year's other-than-temporary impairment recognized		
8. Deduct current year's depreciation	7,020	28,082
9. Book/adjusted carrying value at the end of current period (Lines 1 + 2 + 3 + 4 - 5 + 6 - 7 - 8)	3,661,184	3,642,368
10. Deduct total nonadmitted amounts		
11. Statement value at end of current period (Line 9 minus Line 10)	3,661,184	3,642,368

SCHEDULE B - VERIFICATION

Mortgage Loans

	1	2
	Year To Date	Prior Year Ended December 31
1. Book value/recorded investment excluding accrued interest, December 31 of prior year		
2. Cost of acquired:		
2.1 Actual cost at time of acquisition		
2.2 Additional investment made after acquisition		
3. Capitalized deferred interest and other		
4. Accrual of discount		
5. Unrealized valuation increase (decrease)		
6. Total gain (loss) on disposals		
7. Deduct amounts received on disposals		
8. Deduct amortization of premium and mortgage interest paid		
9. Total foreign exchange change in book value/recorded investment		
10. Deduct current year's other-than-temporary impairment recognized		
11. Book value/recorded investment excluding accrued interest at end of current period (Lines 1 + 2 + 3 + 4 + 5 + 6 - 7 - 8 + 9 - 10)		
12. Total valuation allowance		
13. Subtotal (Line 11 plus Line 12)		
14. Deduct total nonadmitted amounts		
15. Statement value at end of current period (Line 13 minus Line 14)		

NONE

SCHEDULE BA - VERIFICATION

Other Long-Term Invested Assets

	1	2
	Year To Date	Prior Year Ended December 31
1. Book/adjusted carrying value, December 31 of prior year		
2. Cost of acquired:		
2.1 Actual cost at time of acquisition		
2.2 Additional investment made after acquisition		
3. Capitalized deferred interest and other		
4. Accrual of discount		
5. Unrealized valuation increase (decrease)		
6. Total gain (loss) on disposals		
7. Deduct amounts received on disposals		
8. Deduct amortization of premium and depreciation		
9. Total foreign exchange change in book/adjusted carrying value		
10. Deduct current year's other-than-temporary impairment recognized		
11. Book/adjusted carrying value at end of current period (Lines 1 + 2 + 3 + 4 + 5 + 6 - 7 - 8 + 9 - 10)		
12. Deduct total nonadmitted amounts		
13. Statement value at end of current period (Line 11 minus Line 12)		

NONE

SCHEDULE D - VERIFICATION

Bonds and Stocks

	1	2
	Year To Date	Prior Year Ended December 31
1. Book/adjusted carrying value of bonds and stocks, December 31 of prior year	37,338,588	32,499,002
2. Cost of bonds and stocks acquired	1,105,347	7,741,826
3. Accrual of discount	3,925	48,962
4. Unrealized valuation increase (decrease)	(97,074)	424,404
5. Total gain (loss) on disposals	49	91,875
6. Deduct consideration for bonds and stocks disposed of	2,806,832	3,388,480
7. Deduct amortization of premium	14,553	79,000
8. Total foreign exchange change in book/adjusted carrying value		
9. Deduct current year's other-than-temporary impairment recognized		
10. Total investment income recognized as a result of prepayment penalties and/or acceleration fees		
11. Book/adjusted carrying value at end of current period (Lines 1 + 2 + 3 + 4 + 5 - 6 - 7 + 8 - 9 + 10)	35,529,451	37,338,588
12. Deduct total nonadmitted amounts		
13. Statement value at end of current period (Line 11 minus Line 12)	35,529,451	37,338,588

SCHEDULE D - PART 1B
Showing the Acquisitions, Dispositions and Non-Trading Activity
During the Current Quarter for all Bonds and Preferred Stock by NAIC Designation

NAIC Designation	1 Book/Adjusted Carrying Value Beginning of Current Quarter	2 Acquisitions During Current Quarter	3 Dispositions During Current Quarter	4 Non-Trading Activity During Current Quarter	5 Book/Adjusted Carrying Value End of First Quarter	6 Book/Adjusted Carrying Value End of Second Quarter	7 Book/Adjusted Carrying Value End of Third Quarter	8 Book/Adjusted Carrying Value December 31 Prior Year
BONDS								
1. NAIC 1 (a)	31,378,548	1,006,011	2,806,832	(10,579)	29,567,148			31,378,548
2. NAIC 2 (a)	2,874,060				2,874,060			2,874,060
3. NAIC 3 (a)								
4. NAIC 4 (a)								
5. NAIC 5 (a)								
6. NAIC 6 (a)								
7. Total Bonds	34,252,607	1,006,011	2,806,832	(10,579)	32,441,208			34,252,607
PREFERRED STOCK								
8. NAIC 1								
9. NAIC 2								
10. NAIC 3								
11. NAIC 4								
12. NAIC 5								
13. NAIC 6								
14. Total Preferred Stock								
15. Total Bonds & Preferred Stock	34,252,607	1,006,011	2,806,832	(10,579)	32,441,208			34,252,607

(a) Book/Adjusted Carrying Value column for the end of the current reporting period includes the following amount of short-term and cash equivalent bonds by NAIC designation: NAIC 1 \$.....0; NAIC 2 \$.....0; NAIC 3 \$.....0; NAIC 4 \$.....0; NAIC 5 \$.....0; NAIC 6 \$.....0

QS102

SI03 Schedule DA Part 1 NONE

SI03 Schedule DA Verification NONE

SI04 Schedule DB - Part A Verification NONE

SI04 Schedule DB - Part B Verification NONE

SI05 Schedule DB Part C Section 1 NONE

SI06 Schedule DB Part C Section 2 NONE

SI07 Schedule DB - Verification NONE

SI08 Schedule E - Verification (Cash Equivalents) NONE

SCHEDULE A - PART 2

Showing all Real Estate ACQUIRED AND ADDITIONS MADE During the Current Quarter

1 Description of Property	Location		4 Date Acquired	5 Name of Vendor	6 Actual Cost at Time of Acquisition	7 Amount of Encumbrances	8 Book/Adjusted Carrying Value Less Encumbrances	9 Additional Investment Made After Acquisition
	2 City	3 State						
Acquired by Purchase								
1806 Linwood Drive	Paragould	AR	02/17/2022	Nabholz Construction Company	25,836			
0199999 Subtotal - Acquired by Purchase					25,836			
0399999 Totals					25,836			

SCHEDULE A - PART 3

Showing All Real Estate DISPOSED During the Quarter, Including Payments During the Final Year on "Sales Under Contract"

1 Description of Property	Location		4 Disposal Date	5 Name of Purchaser	6 Actual Cost	7 Expended for Additions, Permanent Improvements and Changes in Encumbrances	8 Book/Adjusted Carrying Value Less Encumbrances Prior Year	Change in Book/Adjusted Carrying Value Less Encumbrances					14 Book/Adjusted Carrying Value Less Encumbrances on Disposal	15 Amounts Received During Year	16 Foreign Exchange Gain (Loss) on Disposal	17 Realized Gain (Loss) on Disposal	18 Total Gain (Loss) on Disposal	19 Gross Income Earned Less Interest Incurred on Encumbrances	20 Taxes, Repairs and Expenses Incurred
	2 City	3 State						9 Current Year's Depreciation	10 Current Year's Other-Than- Temporary Impairment Recognized	11 Current Year's Change in Encumbrances	12 Total Change in B/A C.V. (11 - 9 - 10)	13 Total Foreign Exchange Change in B/A C.V.							
NONE																			
0399999 Totals																			

QE01

E02 Schedule B Part 2 NONE

E02 Schedule B Part 3 NONE

E03 Schedule BA Part 2 NONE

E03 Schedule BA Part 3 NONE

SCHEDULE D - PART 3

Show All Long-Term Bonds and Stock Acquired During the Current Quarter

1	2	3	4	5	6	7	8	9	10
CUSIP Identification	Description	Foreign	Date Acquired	Name of Vendor	Number of Shares of Stock	Actual Cost	Par Value	Paid for Accrued Interest and Dividends	NAIC Designation, NAIC Designation Modifier and SVO Administrative Symbol
Bonds - U.S. Political Subdivisions of States, Territories and Possessions									
372453TZ3	Gentry AR SD 04/01/30		02/08/2022	FNBB	X X X	200,000	200,000		1.C Z
850272X34	Springdale AR SD No 050 06/01/51		03/30/2022	Centennial	X X X	149,625	150,000		1.C Z
070999999	Subtotal - Bonds - U.S. Political Subdivisions of States, Territories and Possessions				X X X	349,625	350,000		X X X
Bonds - U.S. Special Revenue, Special Assessment									
959878RA9	Western Wash Univ Hsg & Dining 04/01/44		01/28/2022	Centennial	X X X	103,263	100,000	975	1.F FE
451295D22	Idaho Health Facs Auth Rev 03/01/51		01/31/2022	Centennial	X X X	200,000	200,000		1.G FE
57586N4C2	Massachusetts St HSG 12/01/38		02/22/2022	Centennial	X X X	135,000	125,000	1,125	1.C Z
212582DL1	Conway AR Elec Rev Impt-Ser A 12/01/45		03/31/2022	Centennial	X X X	200,000	200,000		1.C Z
090999999	Subtotal - Bonds - U.S. Special Revenue, Special Assessment				X X X	638,263	625,000	2,100	X X X
Bonds - Unaffiliated Certificates of Deposit									
000000000	First National Bank		01/12/2022	First National Bank	X X X	18,123	18,123		
201999999	Subtotal - Bonds - Unaffiliated Certificates of Deposit				X X X	18,123	18,123		X X X
250999997	Subtotal - Bonds - Part 3				X X X	1,006,011	993,123	2,100	X X X
250999998	Summary Item from Part 5 for Bonds (N/A to Quarterly)				X X X	X X X	X X X	X X X	X X X
250999999	Subtotal - Bonds				X X X	1,006,011	993,123	2,100	X X X
450999998	Summary Item from Part 5 for Preferred Stocks (N/A to Quarterly)				X X X	X X X	X X X	X X X	X X X
450999999	Subtotal - Preferred Stocks				X X X		X X X		X X X
Common Stocks - Industrial and Miscellaneous (Unaffiliated) - Publicly Traded									
464287101	Ishares S&P 100 Index Fund ETF		01/26/2022	Centennial	500.000	99,336	X X X		
501999999	Subtotal - Common Stocks - Industrial and Miscellaneous (Unaffiliated) - Publicly Traded				X X X	99,336	X X X		X X X
598999997	Subtotal - Common Stocks - Part 3				X X X	99,336	X X X		X X X
598999998	Summary Item from Part 5 for Common Stocks (N/A to Quarterly)				X X X	X X X	X X X	X X X	X X X
598999999	Subtotal - Common Stocks				X X X	99,336	X X X		X X X
599999999	Subtotal - Preferred and Common Stocks				X X X	99,336	X X X		X X X
600999999	Total - Bonds, Preferred and Common Stocks				X X X	1,105,347	X X X	2,100	X X X

QE04

SCHEDULE D - PART 4

Show All Long-Term Bonds and Stocks Sold, Redeemed or Otherwise Disposed of During the Current Quarter

1 CUSIP Identification	2 Description	3 F o r e i g n Disposal Date	4 Name of Purchaser	5 Number of Shares of Stock	6 Consideration	7 Par Value	8 Actual Cost	9 Prior Year Book/ Adjusted Carrying Value	Change in Book/Adjusted Carrying Value					16 Book/ Adjusted Carrying Value at Disposal Date	17 Foreign Exchange Gain (Loss) on Disposal	18 Realized Gain (Loss) on Disposal	19 Total Gain (Loss) on Disposal	20 Bond Interest/ Stocks Dividends Received During Year	21 Stated Contractual Maturity Date	22 NAIC Designation, NAIC Designation Modifier and SVO Admini- strative Symbol	
									11 Unrealized Valuation Increase/ (Decrease)	12 Current Year's (Amortization)/ Accretion	13 Current Year's Other Than Temporary Impairment Recognized	14 Total Change in B./A.C.V. (11 + 12 - 13)	15 Total Foreign Exchange Change in B./A.C.V.								
Bonds - U.S. Political Subdivisions of States, Territories and Possessions																					
7454006T3	Centennial	02/01/2022	X X X	100,000	100,000	99,981	100,009		(9)		(9)		100,000				1,250	02/01/2024	1 C FE		
537428R71	FNBB	02/01/2022	X X X	200,000	200,000	200,648	199,955		(4)		(4)		199,951		49	49	3,500	02/01/2033	1 C FE		
212597L89	Centennial	02/01/2022	X X X	150,000	150,000	140,903	149,943		57		57		150,000				1,969	02/01/2034	1 C FE		
212597L97	Centennial	02/01/2022	X X X	150,000	150,000	140,109	149,941		59		59		150,000				1,969	02/01/2035	1 C FE		
823619SZ5	Centennial	02/01/2022	X X X	200,000	200,000	198,478	199,992		8		8		200,000				3,250	02/01/2038	1 C Z		
7170952E2	Centennial	02/15/2022	X X X	100,000	100,000	103,675	100,059		(59)		(59)		100,000				1,125	02/15/2023	1 A FE		
070999999	Subtotal - Bonds - U.S. Political Subdivisions of States, Territories and Possessions			X X X	900,000	900,000	883,794	899,899		52		52	899,951		49	49	13,063	X X X	X X X		
Bonds - U.S. Special Revenue, Special Assessment																					
04084CCA0	Centennial	01/03/2022	X X X	5,000	5,000	5,000	5,000						5,000				91	07/01/2023	1 A FE		
24170PUJ3	Centennial	02/01/2022	X X X	100,000	100,000	99,752	100,000		0		0		100,000				1,000	02/15/2022	1 C Z		
899645YG4	Centennial	03/01/2022	X X X	200,000	200,000	200,000	200,000						200,000				3,000	10/01/2030	1 C FE		
090999999	Subtotal - Bonds - U.S. Special Revenue, Special Assessment			X X X	305,000	305,000	304,752	305,000		0		0	305,000				4,091	X X X	X X X		
Bonds - Unaffiliated Certificates of Deposit																					
000000000	First National Bank	03/31/2022	First National Bank	X X X	1,601,832	1,601,832	1,601,832	1,601,832					1,601,732						01/12/2023		
201999999	Subtotal - Bonds - Unaffiliated Certificates of Deposit			X X X	1,601,832	1,601,832	1,601,832	1,601,832					1,601,732						X X X	X X X	
250999999	Subtotal - Bonds - Part 4			X X X	2,806,832	2,806,832	2,790,378	2,806,731		52		52	2,806,683		49	49	17,153	X X X	X X X		
250999999	Summary Item from Part 5 for Bonds (N/A to Quarterly)			X X X	X X X	X X X	X X X	X X X	X X X	X X X	X X X	X X X	X X X	X X X	X X X	X X X	X X X	X X X	X X X	X X X	
250999999	Subtotal - Bonds			X X X	2,806,832	2,806,832	2,790,378	2,806,731		52		52	2,806,683		49	49	17,153	X X X	X X X		
450999999	Summary Item from Part 5 for Preferred Stocks (N/A to Quarterly)			X X X	X X X	X X X	X X X	X X X	X X X	X X X	X X X	X X X	X X X	X X X	X X X	X X X	X X X	X X X	X X X	X X X	
450999999	Subtotal - Preferred Stocks			X X X	X X X	X X X	X X X	X X X	X X X	X X X	X X X	X X X	X X X	X X X	X X X	X X X	X X X	X X X	X X X	X X X	
598999999	Summary Item from Part 5 for Common Stocks (N/A to Quarterly)			X X X	X X X	X X X	X X X	X X X	X X X	X X X	X X X	X X X	X X X	X X X	X X X	X X X	X X X	X X X	X X X	X X X	
598999999	Subtotal - Common Stocks			X X X	X X X	X X X	X X X	X X X	X X X	X X X	X X X	X X X	X X X	X X X	X X X	X X X	X X X	X X X	X X X	X X X	
599999999	Subtotal - Preferred and Common Stocks			X X X	X X X	X X X	X X X	X X X	X X X	X X X	X X X	X X X	X X X	X X X	X X X	X X X	X X X	X X X	X X X	X X X	
600999999	Total - Bonds, Preferred and Common Stocks			X X X	2,806,832	X X X	2,790,378	2,806,731		52		52	2,806,683		49	49	17,153	X X X	X X X		

QE05

E06 Schedule DB Part A Section 1 NONE

E07 Schedule DB Part B Section 1 NONE

E08 Schedule DB Part D Section 1 NONE

E09 Schedule DB Part D Section 2 - Collateral Pledged By Reporting Entity NONE

E09 Schedule DB Part D Section 2 - Collateral Pledged To Reporting Entity NONE

E10 Schedule DB Part E NONE

E11 Schedule DL - Part 1 - Securities Lending Collateral Assets NONE

E12 Schedule DL - Part 2 - Securities Lending Collateral Assets NONE

SCHEDULE E - PART 1 - CASH**Month End Depository Balances**

1 Depository		2 Code	3 Rate of Interest	4 Amount of Interest Received During Current Quarter	5 Amount of Interest Accrued at Current Statement Date	Book Balance at End of Each Month During Current Quarter			9 *
						6 First Month	7 Second Month	8 Third Month	
open depositories									
FNB REGULAR CHECKING ..	PARAGOULD, AR		0.500	16,956		5,856,523	7,867,112	11,465,231	X X X
FNB PAYROLL ACCOUNT ..	PARAGOULD, AR					616	4,379	455	X X X
Centennial Bank Money Market	JONESBORO, AR			47		49,469	863,599	809,121	X X X
0199998 Deposits in0 depositories that do not exceed the allowable limit in any one depository (see Instructions) - open depositories		X X X	X X X						X X X
0199999 Totals - Open Depositories		X X X	X X X	17,003		5,906,608	8,735,090	12,274,806	X X X
0299998 Deposits in0 depositories that do not exceed the allowable limit in any one depository (see Instructions) - suspended depositories		X X X	X X X						X X X
0299999 Totals - Suspended Depositories		X X X	X X X						X X X
0399999 Total Cash On Deposit		X X X	X X X	17,003		5,906,608	8,735,090	12,274,806	X X X
0499999 Cash in Company's Office		X X X	X X X	X X X	X X X	400	400	400	X X X
0599999 Total Cash		X X X	X X X	17,003		5,907,008	8,735,490	12,275,206	X X X

SCHEDULE E - PART 2 - CASH EQUIVALENTS

Show Investments Owned End of Current Quarter

1	2	3	4	5	6	7	8	9	
CUSIP	Description	Code	Date Acquired	Rate of Interest	Maturity Date	Book/Adjusted Carrying Value	Amount of Interest Due & Accrued	Amount Received During Year	
<div style="border: 1px solid black; padding: 10px; display: inline-block;"> <h1 style="margin: 0;">N O N E</h1> </div>									
8609999999 Total Cash Equivalents									

Amended Statement Cover